

# Welcome to the



**February 14, 2023 Collaborative Meeting  
10:00-12:00pm at the Allegheny Intermediate Unit**

***Then, Ten, and Time Ahead:  
Jefferson Regional Foundation 10<sup>th</sup> Anniversary***

# Black History Month

- 

- Indulge in a sweet treat at your table for Valentine's Day

## MISSION

We are a network of 120+ community-serving organizations who are committed to bringing together change-makers to positively impact the health & vitality of communities south of Pittsburgh.



## VISION

To create agile, healthy, and sustainable communities for diverse populations throughout the Jefferson region while:

- Serving as an incubator for powerful ideas and promising practices
- Improving the capacity of community-serving organizations
- Facilitating group action on community aspirations

# Welcome New Collaborative Members



# What's Happening Today and Goals

<b>10:00 – 10:10am</b>	<b>Welcome, Meeting Overview, and Then, Ten, and Time Ahead</b>
<b>10:10 – 10:40am</b>	<b>Community Strengths and Needs Review and Report Out</b>
<b>10:40 – 11:00am</b>	<b>Community Voice Fund</b>
<b>11:00 – 11:20am</b>	<b>Our Changing Community: A Review of Data Trends in the Jefferson Regional Service Area</b>
<b>11:20 – 11:45am</b>	<b>Time Ahead: Jefferson Community Collaborative Table Discussion</b>
<b>11:45 – 12:00pm</b>	<b>Community Shares and Final Remarks</b>

**Please Complete Your Survey Before Leaving Today!**

# The Foundation is Turning 10!

## What does this mean for the Collaborative?

- **February 2023 Collaborative Meeting:** Unveiling of funding opportunities for community partners around convening
- **May 2023 Collaborative Meeting:** 10<sup>th</sup> Anniversary Foundation video release
- **September 2023 Collaborative Meeting:** Celebrating the work of the Collaborative
- **November 2023 Collaborative Meeting:** Report out on community convenings



# Jefferson Regional Foundation Team



**Dr. Trisha M. Gadson**  
Chief Executive Officer



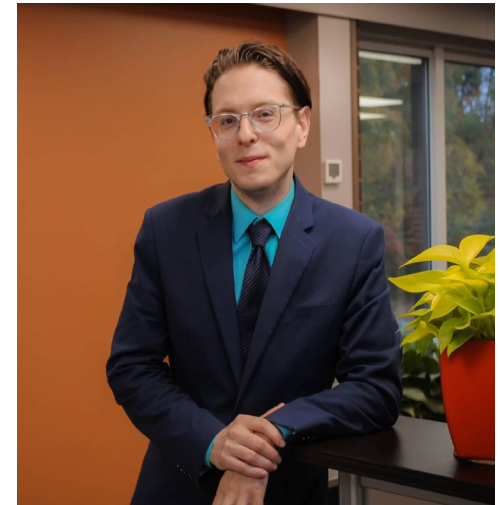
**Kelleigh Boland**  
Director of Grantmaking and Strategy



**Danny Vereb**  
Community Engagement Manager



**Steve Ankney**  
Research and Data Analyst



**Tyler Wheeler**  
Office Manager

# Community Strengths and Needs Review and Report Out

Dr. Trisha Gadson  
CEO  
Jefferson Regional Foundation





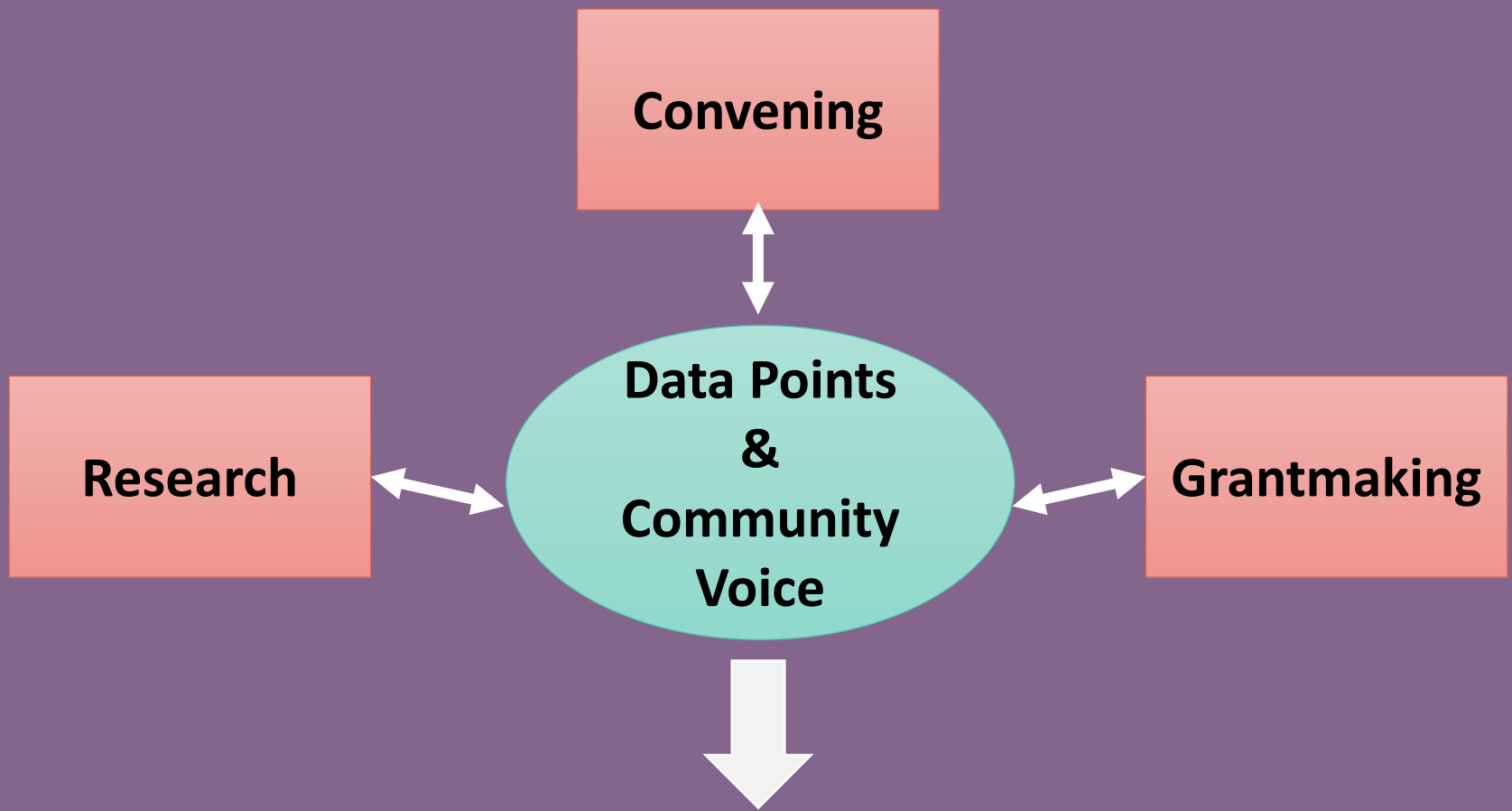
# Envisioning the Foundation's Next 10 Years

We look to the Collaborative to define our aspiration and action – our *community need*.

- **Aspiration:** What do we want to see in the Jefferson Regional Communities by 2033?
- **Action:** By 2028, what are the deliverables to begin to accomplish this?

# Outcomes of Addressing Community Need

Community Needs **Addressed** =  
Improved Health and Well-Being



**Informs JRF's Response to Community Need**

# November Collaborative Activity Framing

While we recognize that the Foundation serves the entire Jefferson footprint, we realize that *community need may look different based on geographics.*



# Our Footprint in Sub-Areas Defined with the Help of Vision Council

1) Bethel Park, South Park, Pleasant Hills, Jefferson Hills

2) Brentwood, Baldwin, Whitehall

3) Forward, Elizabeth Township, Elizabeth Borough, West Elizabeth

4) West Mifflin, Homestead, West Homestead, Munhall, Whitaker, Duquesne

5) Clairton, Port Vue, Dravosburg, Glassport, Liberty, Lincoln, Versailles, South Versailles, McKeesport

# Questions Posed at November Collaborative Meeting

# 1. Identify & prioritize *strengths* within your community

## 2. Identify & prioritize *community need* within your geographic area

### 3. Provide *specific examples of need*

4. Provide specific examples of *strengths that support need in your community*



# What Did We Do With the Information?

Compiled responses and discussed with Vision Council facilitators for clarity and accuracy

## Created summaries by geographic region

Created a one-pager summary with overall themes and takeaways



# Geographic Area Summaries

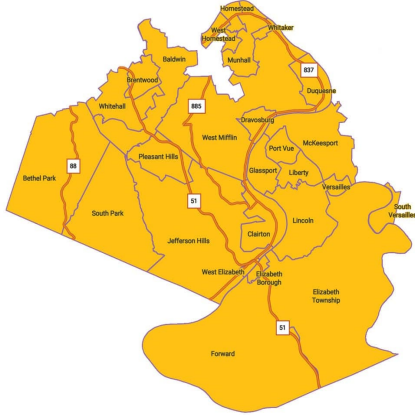
# Bethel Park, South Park, Pleasant Hills, Jefferson Hills

- Community spirit is a strength
- Opportunity to be inclusive of new voices
- Transportation is a barrier
- Access to senior and mental health services is a need





# Geographic Area Summaries



## Brentwood, Baldwin, Whitehall

- Transportation is a strength and need
- Available resources aren't readily known by the community
- Participants expressed the need to combat racism within the community
- Opportunity to engage more with public officials

# Geographic Area Summaries

Clairton, Port Vue, Dravosburg,  
Glassport, Liberty, Lincoln,  
Versailles, South Versailles,  
McKeesport

- Great sense of community pride and collaboration
- Need for additional youth programming
- Align funding with community needs including housing and infrastructure
- Community safety is a need



# Geographic Area Summaries

## Forward, Elizabeth Boro, Elizabeth Twp, West Elizabeth



- Tight-knit community
- Opportunity for increased youth services and programming
- Transportation is a barrier
- Workforce development and facilitating connections between job seekers and employers

# Geographic Area Summaries

## West Mifflin, Homestead, West Homestead, Munhall, Whitaker, Duquesne

- Strong family and faith-based communities
- Available resources aren't readily known by the community
- Access to senior, mental health and transportation services



# What We Learned

## Identified Areas of Need Within the Entire Jefferson Footprint:

- Housing
- Mental Health
- Safety
- Senior Services
- Transportation
- Youth Services



# What We Learned

The Collaborative indicated that there is a need to **connect community members with municipal leaders and public officials.**

**Discussions change with resident voice at the table.**

- Residents describe strengths as people.
- Providers describe strengths as places and resources.

**61% of survey respondents** from the November Collaborative meeting **do not live within the Jefferson service area.**

**NO attendee** at the November Collaborative meeting identified the Elizabeth geographic sub-area as their **primary service area.**

During the discussion of community strengths and needs at the Elizabeth table, **no one lived in the service area.**

# Community Voice Fund

Kelleigh Boland  
Director of Grantmaking and Strategy  
Jefferson Regional Foundation



# The Foundation is Turning 10!

A New Decade, A New Leader = New Opportunities

The tenth anniversary of the Foundation provides for a renewed focus on engaging residents and stakeholders on strategies for increasing health and wellness within the community.





# PURPOSE OF COMMUNITY VOICE FUND

- Include resident energy, knowledge, passion, and lived experience
- Create intentional space for community conversation(s) on immediate and long-term ideas and action plans
- Support convening of residents and stakeholders of the Jefferson service area
- Increase health and well-being



**The Community Voice Fund supports the opportunity for residents to have a voice in the identification of the strengths and needs in their communities and to be actively involved in creating solutions**



# Community Voice Fund Guidelines

Grant request not to exceed \$35,000

- Must be willing to establish or have a relationship with Foundation
- Applications will be accepted on a rolling basis
- Convening(s) must take place in Jefferson Regional service area
- An application does not prohibit an organization from applying for the Foundation's annual grant cycles
- Applications must be submitted by a fiduciary with a qualified 501(c)(3) or a public entity. If a resident wants to apply and does not hold a 501(c)(3), they will need to work with an organization that can act as the fiscal agent and holds a 501(c)(3) status. Foundation staff are happy to assist with this connection if needed.



# Convening(s) can take place in one or more of the five service areas

1) Bethel Park, South Park, Pleasant Hills, Jefferson Hills

2) Brentwood, Baldwin, Whitehall

3) Forward, Elizabeth Township, Elizabeth Borough, West Elizabeth

4) West Mifflin, Homestead, West Homestead, Munhall, Whitaker, Duquesne

5) Clairton, Port Vue, Dravosburg, Glassport, Liberty, Lincoln, Versailles, South Versailles, McKeesport

# Considerations When Planning Convening(s) with Residents and Stakeholders

- What will be your **engagement strategy** and how will you connect with the community?
- How will you assure residents will have a **voice** in the process?
- How will you **recruit and invite** residents and stakeholders?
- How will you incorporate community **strengths** into suggested **recommendations/resolutions**?
- **Expenses** to consider- stipends for participants, staff time, space and supplies, food, and recruitment/marketing/engagement

# Reporting and Next Steps

If awarded a *Community Voice Fund* grant, the final report will request the following:

- a. Where did the convening(s) take place?
- b. How many people attended the convening(s)?
- c. How did you determine the agenda(s) for the convening(s)?
- d. Please share the agenda(s) (attach with report submission)
- e. Important results
- f. What you learned and specific recommendations/resolutions
- g. Unanticipated impacts either positive or negative

Foundation staff will work with each grant awardee to further understand and explore all options to leverage resources and support to help mitigate barriers to health and well-being within the Jefferson Regional service area.



# TIMELINE

- **March 3, 2023-** Applications will be available on the Foundation's website and shared via email.
- **March 4, 2023-April 28<sup>th</sup>, 2023-** Applications will be accepted at [Kelleigh.boland@jeffersonrf.org](mailto:Kelleigh.boland@jeffersonrf.org)
- **April 28<sup>th</sup>- September 30<sup>th</sup>-** convenings take place
- **October 2023-** final reports submitted to the Foundation
- **November 2023-** convenings are a focus of discussion at the Collaborative meeting

All questions received after March 3, 2023 related to the application will be shared with answers on the Foundation's website.



# Questions?







## Our Changing Communities:

# A Review of Data Trends in the Jefferson Regional Service Area

## Data Story Maps

Jefferson Collaborative Meeting

February 14, 2023

*Steve Ankney – Research & Data Analyst*

# Data Story Maps as A Tool

- Detailed data is not easily and readily available for the Jefferson Regional Service Area
- Story maps transform data into a visual narrative and are an interactive way to engage with and geographically compare data from across the Jefferson Regional Service Area
- We want to put data into your hands to collaborate with other stakeholders and seize opportunities to help residents

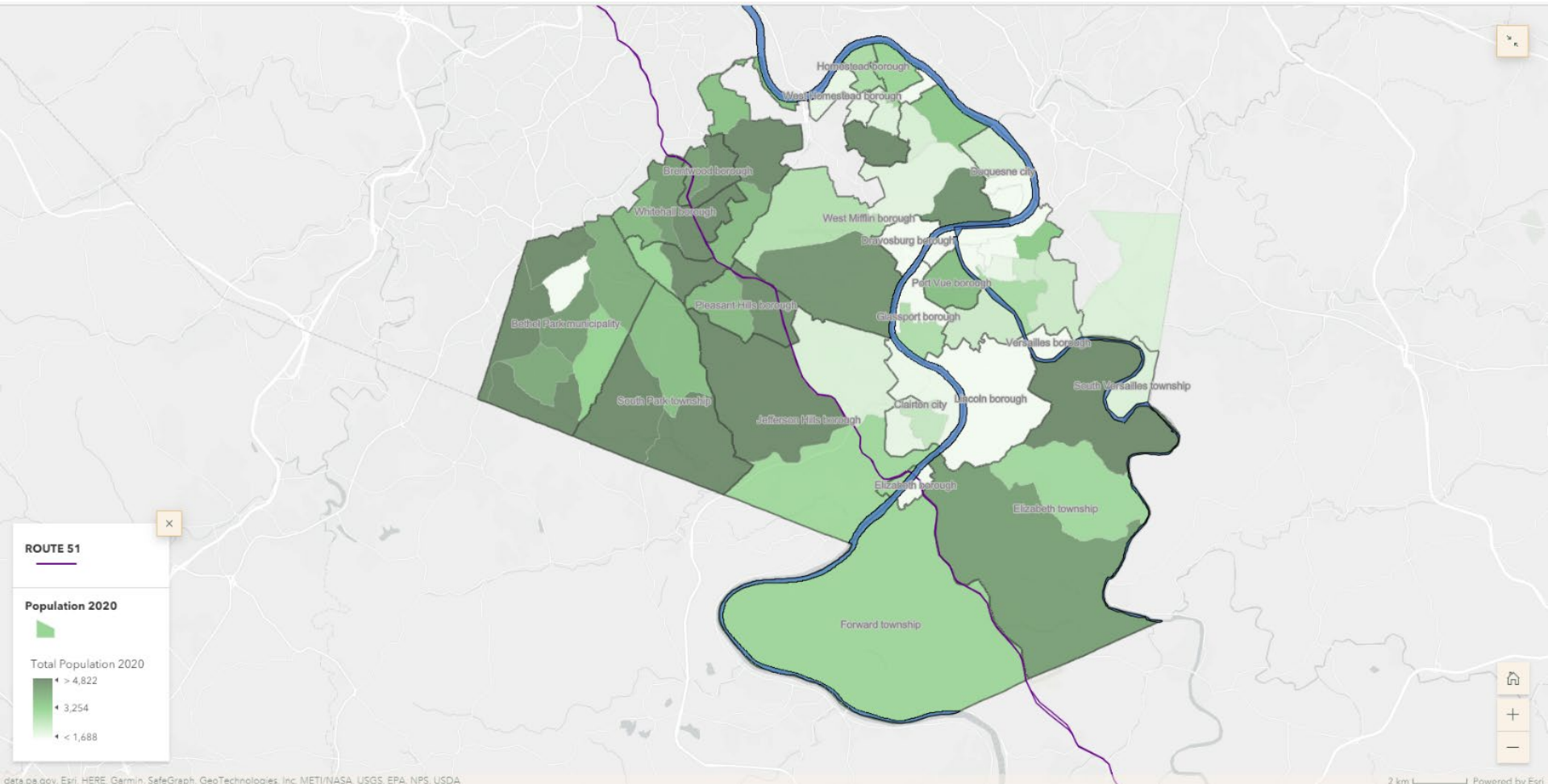


# What's In a Data Story Map?

- Each map focuses on a different topic
  - Pop up menus show you data at the municipal or census tract level with data disaggregated by race and age wherever possible
    - Zoom in to see exactly where census tracts are in the community to identify pockets of interest
  - Some maps allow you to compare conditions in 2010 vs. 2020 to show change over time

# Data Story Map Example

## Total Population in 2020



# Call to Action

Data is great, but it's best when put to use!

We hope that you will:

- 1) Use *Our Changing Communities* data story maps to build capacity for your organization
- 2) Reference this data when applying for the Community Voice Fund
- 3) Use data to plan programs, conduct outreach, and identify areas of strength and need in the Jefferson communities
- 4) Sign up for a Data Story Map Guidance session, to learn how to get the most out of these tools

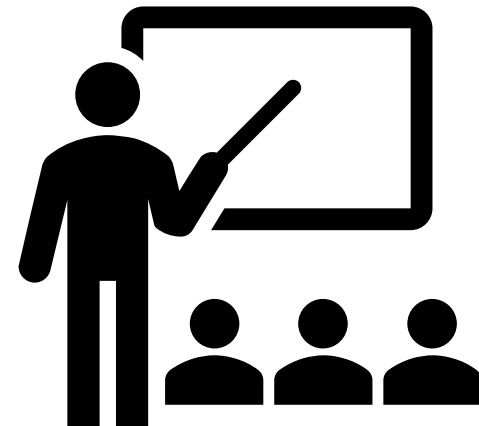
# Data Story Map Guidance Sessions

You'll have an opportunity to sign up for these sessions today on the meeting survey or through future Collaborative emails.

Foundation staff will follow up with a calendar hold invitation.

Sessions will be held on:

- **Tuesday, February 28th 2pm-3pm**
- **Tuesday, March 7th 10am-11am**
- **Tuesday, March 21st 2pm-3pm**
- **Tuesday, April 4th 10am-11am**
- **Tuesday, April 18th 2pm-3pm**



We invite you to utilize the data story maps, which will be made available on our website for the launch of the **Community Voice Fund on March 3<sup>rd</sup>**.

[www.jeffersonrf.org](http://www.jeffersonrf.org)

Thank you!

# Time Ahead: Jefferson Community Collaborative Table Discussion

Dr. Trisha Gadson

CEO

Jefferson Regional Foundation

Kelleigh Boland

Director of Grantmaking and Strategy

Jefferson Regional Foundation





# Time Ahead Table Discussion Framing

- **With your table, brainstorm responses to three questions around the “Time Ahead” for the Collaborative**
- **One representative to record group responses**
- **Group share out**

## Save the Dates

Wednesday, May 24

- 10:00-12:00pm
- Penn State Greater Allegheny

Wednesday, September 27

- **Collaborative Celebration of the 10-year Foundation Anniversary**
- **Crowne Plaza Bethel Park (Time TBD)**



# Survey Time!

Please complete the  
Collaborative Meeting  
Survey during  
Community Shares

TAKE THE  
SURVEY

# Community Shares

Share a brief announcement  
or update with the  
Collaborative.



# Before You Go...

1. **MEETING SURVEY:** Please complete and leave in the bin with nametag when you leave
2. **TIME AHEAD TABLE DISCUSSION:** Finalize and leave at the table
3. **DIRECTORY:** Make a plan with your organization to update your existing listing or add a new listing
4. **NETWORK:** Connect and reconnect with fellow Collaborative members